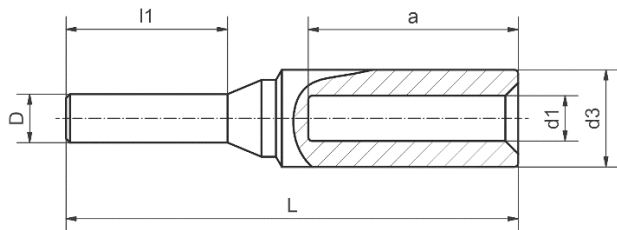


AL Weitkowitz pindbolt 50-150mm²



Application

Used for connecting aluminum cables to connections requiring copper connection.

Material	Al 99,5
Surface	Nickel plated 3 - 5 μm , tinned min. 20 μm .
Filling	Aluminum tubes are filled with contact grease.

Cross section (mm ²)		Die code	Dimensions in mm						Weight (Gram) total	Packaging unit (pcs.)	Tool recommendation	
rm/sm*	se**		d1	d3	D	l1	L	a				
50	70	16	9,8	16	8	25	78	41	22	25	HPW 17 HHW 30 APW 30 HPW 18	APW 18 HPW 18
70	95	18	11,2	18,5	10	30	92,5	48	36,38	10		
95	120	22	13,2	22	12	33	95	48	52,27	10		
120	150	22	14,7	23	12	38	105	49	59,27	10		
150	185	25	16,3	25	12	38	117,5	58,5	77,11	5		

*rm = round stranded

*sm = sector stranded

**se = sector solid

(Sector solid shaped conductors must be rounded with dies for round-forming)

